

STATE OF NORTH CAROLINA DEPARTMENT OF  
TRANSPORTATION HIGHWAY DIVISION 6

## **PLANS**

**Letting Date: March 18, 2026**

**CONTRACT ID: DF00548**

**TIP NO.: -----**

**FEDERAL AID NO.: STATE FUNDED**

**WBS ELEMENT NO.: 2026CPT.06.20.10092.1, 2026CPT.06.20.10242.1, 2026CPT.06.20.10262.1,  
2026CPT.06.20.10432.1 & 2026CPT.06.20.10782.1**

**ROUTE NO.: VARIOUS**

**LOCATION: VARIOUS**

**COUNTY: DIVISION 6 - BLADEN, COLUMBUS, CUMBERLAND, HARNETT & ROBESON**

**TYPE OF WORK: PERMANENT RAISED PAVEMENT MARKER INSTALLATIONS**

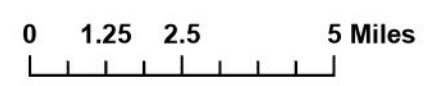
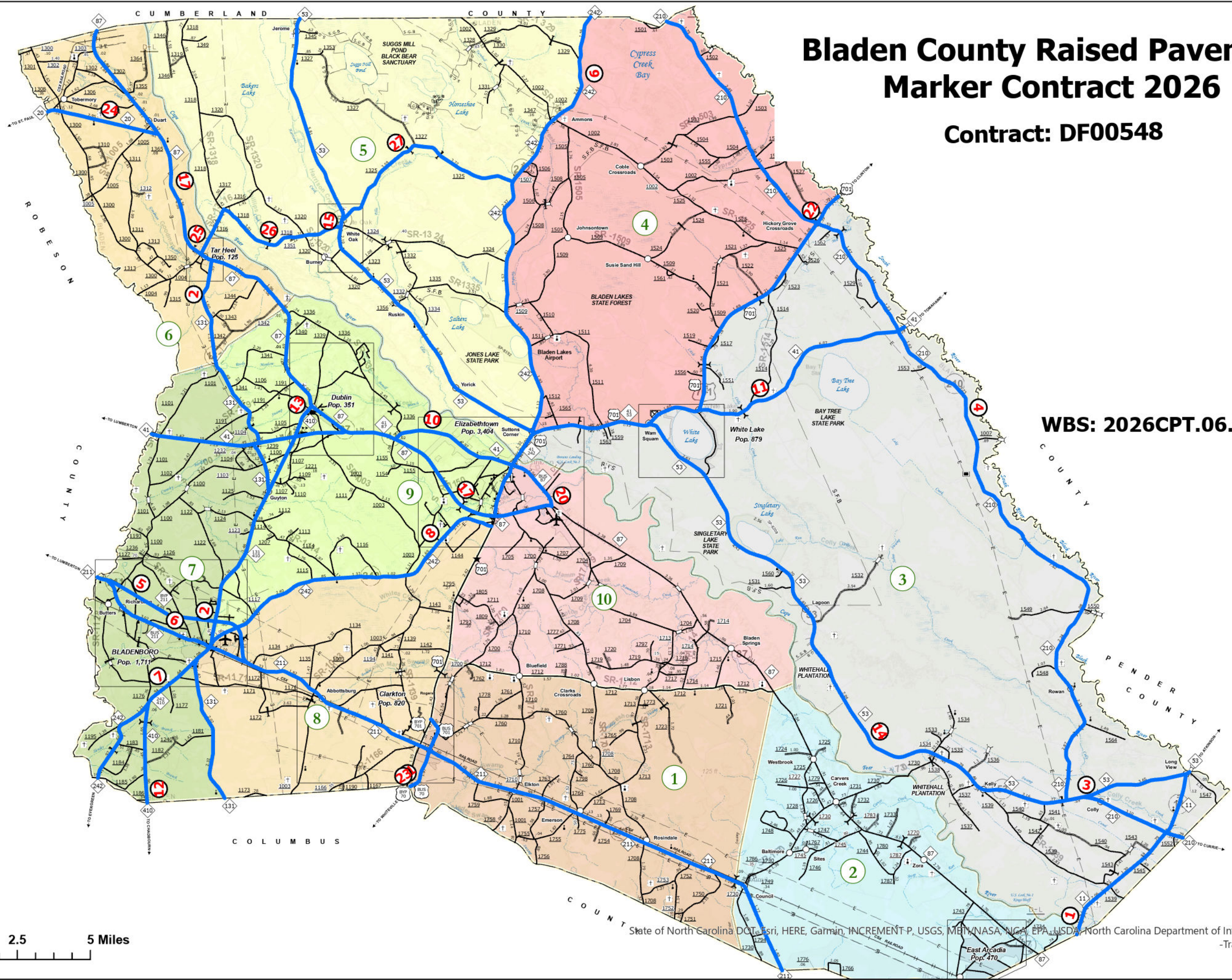
**LENGTH OF PROJECT: 950.62 MILES**

# Bladen County Raised Pavement Marker Contract 2026

Contract: DF00548



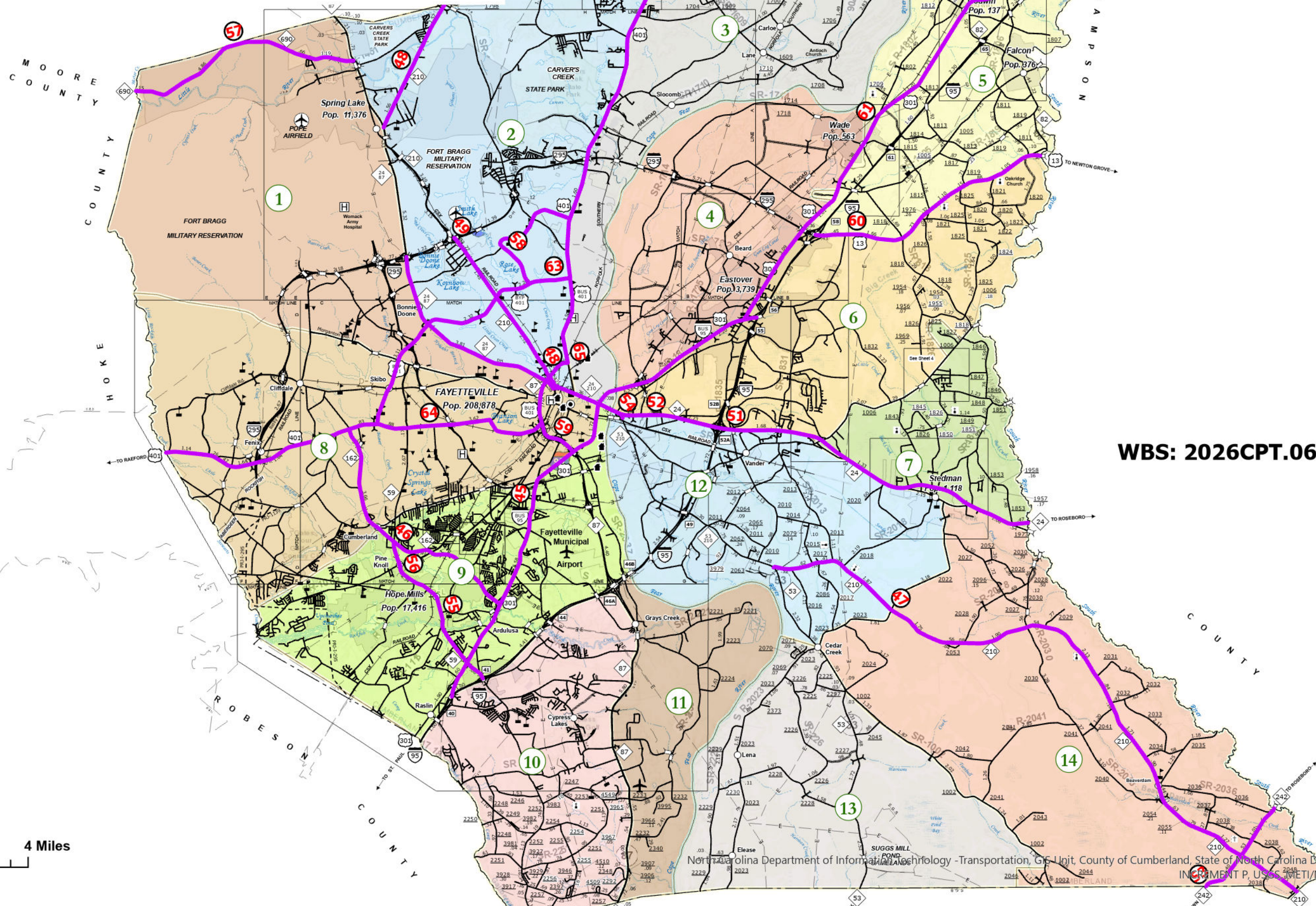
WBS: 2026CPT.06.20.10092.1



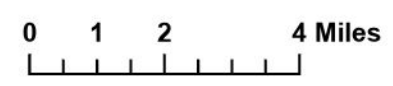


# Cumberland County Raised Pavement Marker Contract 2026

Contract: DF00548



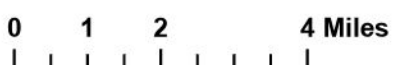
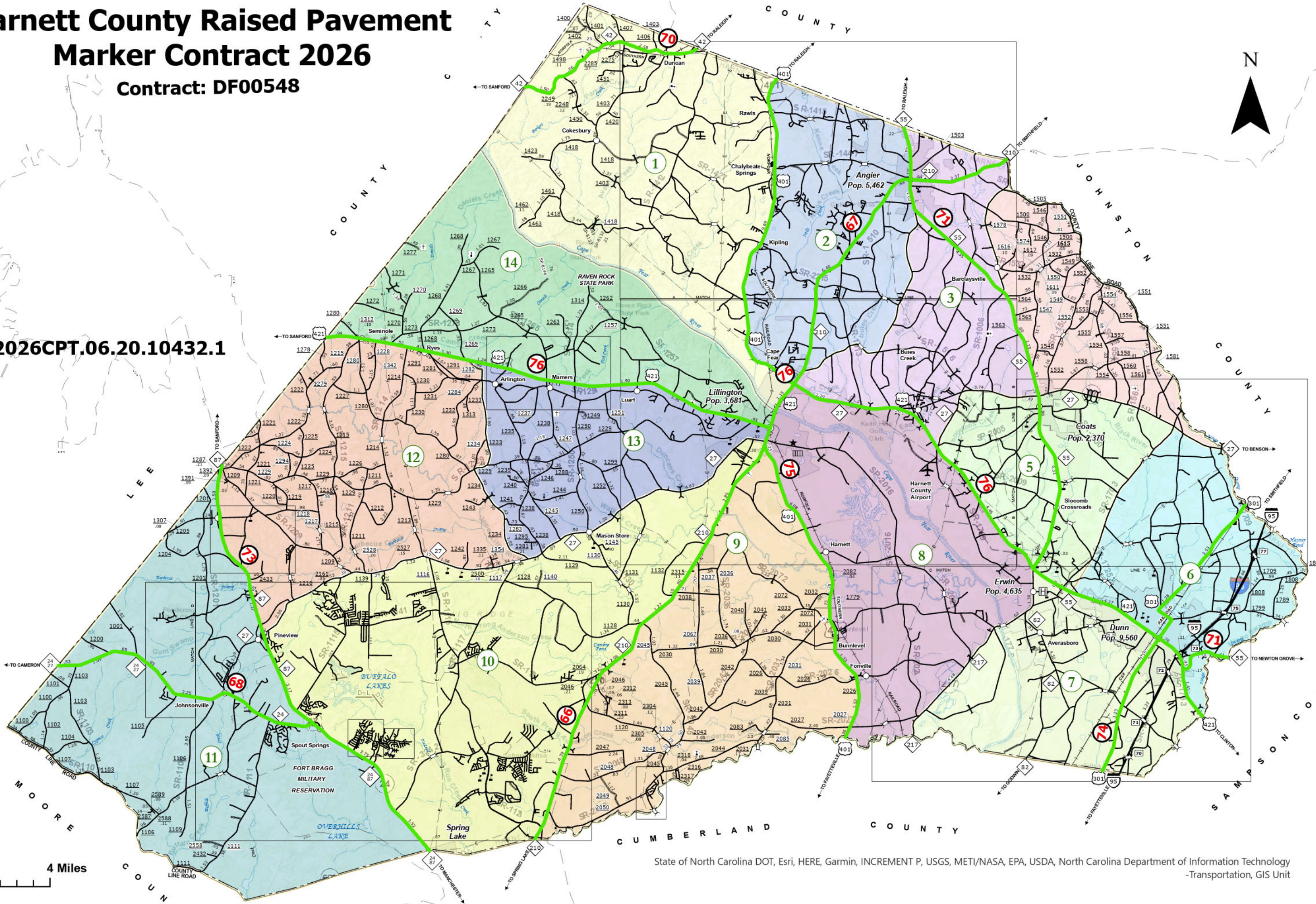
WBS: 2026CPT.06.20.10262.1



# Harnett County Raised Pavement Marker Contract 2026

Contract: DF00548

WBS: 2026CPT.06.20.10432.1

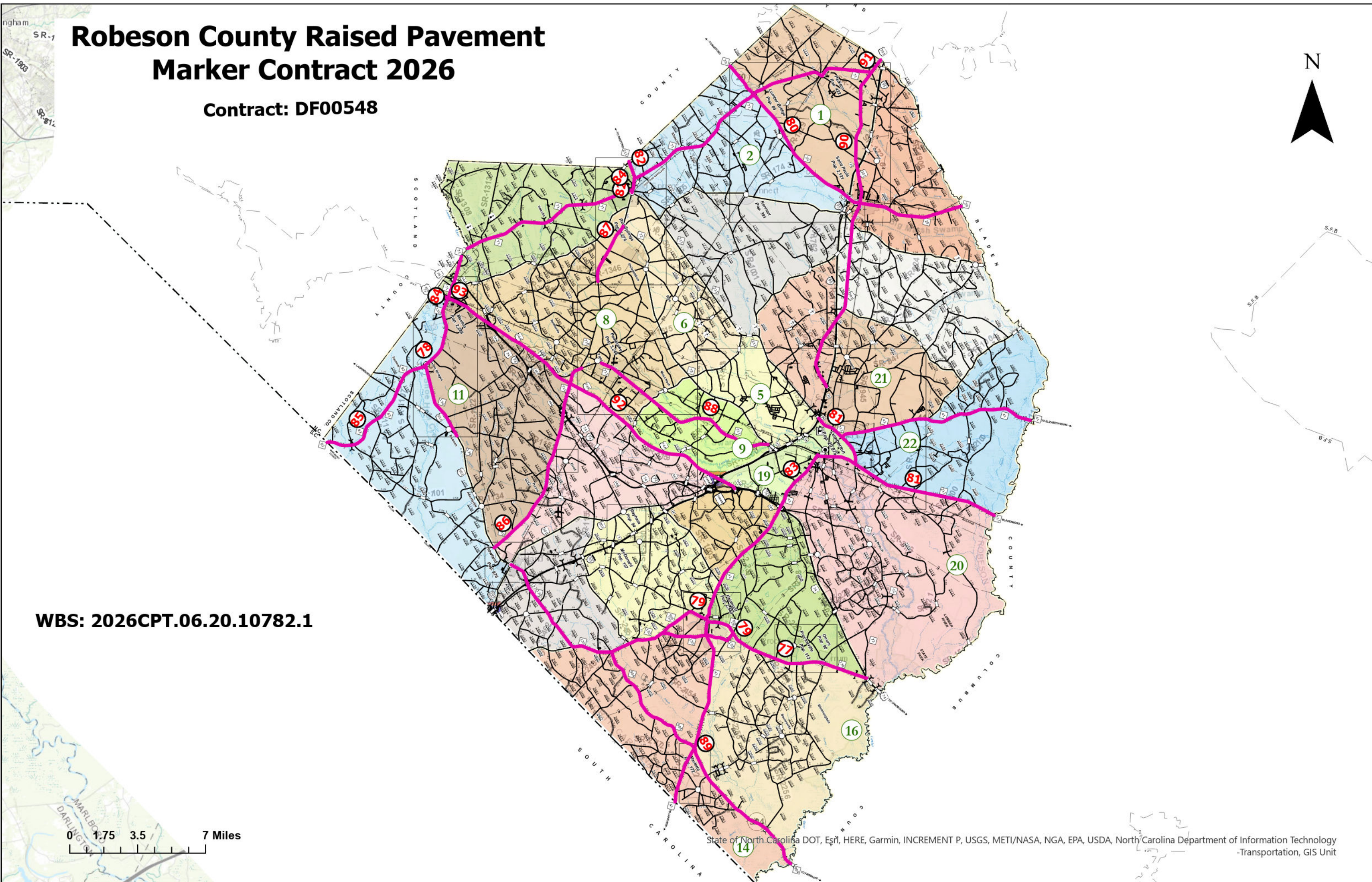


# Robeson County Raised Pavement Marker Contract 2026

Contract: DF00548



WBS: 2026CPT.06.20.10782.1



Map	County	WBS	Route	From	To	MP_From	MP_To	Length	Quantity	Quantity
									Y/Y	C/R
1	Bladen	2026CPT.06.20.10092.1	NC 11	COLUMBUS CL	SR 1547	0	7.03	7.03	480	23
2	Bladen	2026CPT.06.20.10092.1	NC 131	COLUMBUS CL	NC 87	0	20.302	20.302	1411	61
3	Bladen	2026CPT.06.20.10092.1	NC 210	PENDER CL	NC 53	0	3.71	3.71	243	16
4	Bladen	2026CPT.06.20.10092.1	NC 210	US 701	CUMBERLAND CL	4.297	37.831	33.534	589	0
5	Bladen	2026CPT.06.20.10092.1	NC 211	COLUMBUS CL	ROBESON CL	0	28.495	28.495	2110	254
6	Bladen	2026CPT.06.20.10092.1	NC 211 BUS	NC 211	NC 211	0	5.78	5.78	428	4
7	Bladen	2026CPT.06.20.10092.1	NC 242	COLUMBUS CL	NC 131	0	5.553	5.553	388	47
8	Bladen	2026CPT.06.20.10092.1	NC 242	NC 131	US 701	6.268	17.515	11.247	823	40
9	Bladen	2026CPT.06.20.10092.1	NC 242	US 701/ NC 53	CUMBERLAND CL	36.979	20.919	16.06	1060	0
10	Bladen	2026CPT.06.20.10092.1	NC 41	ROBESON CL	US 701	0	12.849	12.849	647	184
11	Bladen	2026CPT.06.20.10092.1	NC 41	US 701	SAMSON CL	20.119	28.351	8.232	554	15
12	Bladen	2026CPT.06.20.10092.1	NC 410	COLUMBUS CL	NC 242	0	3.458	3.458	226	0
13	Bladen	2026CPT.06.20.10092.1	NC 410	NC 131	NC 87	12.088	15.389	3.301	279	88
14	Bladen	2026CPT.06.20.10092.1	NC 53	NC 11	US 701 SOUTH	0.172	25.86	25.688	1766	35
15	Bladen	2026CPT.06.20.10092.1	NC 53	US 701 SOUTH	CUMBERLAND CL	29.889	47.539	17.65	481	0
17	Bladen	2026CPT.06.20.10092.1	NC 87	NC 87 BUS	CUMBERLAND CL	23.206	48.923	25.717	1690	5264
20	Bladen	2026CPT.06.20.10092.1	NC 87 BUS	NC 87 SOUTH	US 701	0	2.058	2.058	0	35
21	Bladen	2026CPT.06.20.10092.1	US 701	COLUMBUS CL	PERIMETER RD	0	0.413	0.413	27	0
22	Bladen	2026CPT.06.20.10092.1	US 701	NC 87	SAMSON CL	28.098	9.835	18.263	2791	800
23	Bladen	2026CPT.06.20.10092.1	US 701	COLUMBUS CL	US 701	0	2.688	2.688	206	58
24	Bladen	2026CPT.06.20.10092.1	NC 20	ROBESON CL	NC 87	0	3.872	3.872	256	0
25	Bladen	2026CPT.06.20.10092.1	SR 1316	NC 87	SR 1318	0	1.722	1.722	134	12
26	Bladen	2026CPT.06.20.10092.1	SR 1318	NC 53	SR 1316	0	4.622	4.622	305	0
27	Bladen	2026CPT.06.20.10092.1	SR 1325	NC 53	NC 242	0	7.44	7.44	491	0
									<b>17385</b>	<b>6936</b>
<b>Total:</b>								<b>262.654</b>	<b>24321</b>	

Map	County	WBS	Route	From	To	MP_From	MP_To	Length	Quantity	Quantity	
									Y/Y	C/R	
28	Columbus	2026CPT.06.20.10242.1	NC 11	US 74	BLADEN CL	0	5.539	5.539	371	13	
29	Columbus	2026CPT.06.20.10242.1	NC 131	US 701	BLADEN CL	0	4.169	4.169	275	0	
30	Columbus	2026CPT.06.20.10242.1	NC 211	US 74	BLADEN CL	10.635	14.448	3.813	276	23	
31	Columbus	2026CPT.06.20.10242.1	NC 214	US 74 BUS	US 74	0	17.911	17.911	617	226	
32	Columbus	2026CPT.06.20.10242.1	NC 242	US 76	BLADEN CL	0	13.613	13.613	990	107	
33	Columbus	2026CPT.06.20.10242.1	NC 410	US 74 W	BLADEN CL	16.982	24.156	7.174	511	19	
34	Columbus	2026CPT.06.20.10242.1	NC 904	ROBESON CL	SR 1305	0	34.177	34.177	1850	66	
35	Columbus	2026CPT.06.20.10242.1	NC 905	NC 904	NC 130	5.053	20.903	15.85	1087	0	
36	Columbus	2026CPT.06.20.10242.1	US 701 BUS	US 701	US 701	16.699	21.403	4.704	445	289	
37	Columbus	2026CPT.06.20.10242.1	US 701 BUS	US 701	BLADEN CL	29.47	29.69	0.22	20	32	
38	Columbus	2026CPT.06.20.10242.1	US 74	BRUNSWICK CL	SR 1824	47.404	45	0.944	0	260	
39	Columbus	2026CPT.06.20.10242.1	US 74	ROBESON CL	US 701	0	17.307	17.307	0	2706	
40	Columbus	2026CPT.06.20.10242.1	US 74 BUS	US 74	US 74 W	0.049	12.188	12.139	944	0	
41	Columbus	2026CPT.06.20.10242.1	US 76	US 76 W	US 74	0	16.619	16.619	1239	118	
42	Columbus	2026CPT.06.20.10242.1	US 76	US 74	US 76	35.394	36.106	0.712	35	10	
43	Columbus	2026CPT.06.20.10242.1	US 701	SR 1198	BLADEN CL	14.8	17.8	3	198	20	
44	Columbus	2026CPT.06.20.10242.1	US 410	US 410	BLADEN CL	13.6	24.14	10.54	695	15	
									<b>9553</b>	<b>3904</b>	
									<b>Total:</b>	<b>168.431</b>	<b>13457</b>

Map	County	WBS	Route	From	To	MP_From	MP_To	Length	Quantity	Quantity
									Y/Y	C/R
45	Cumberland	2026CPT.06.20.10262.1	I 95 Bus	I 95 N	I 95	0	15.074	15.074	0	4310
46	Cumberland	2026CPT.06.20.10262.1	NC 162	US 401	NC 162 W	0	7.457	7.457	166	2113
47	Cumberland	2026CPT.06.20.10262.1	NC 210	BLADEN CL	NC 53	0	19.679	19.679	1317	0
48	Cumberland	2026CPT.06.20.10262.1	NC 210	NC 210 S	HARNETT CL	28.359	41.516	13.157	978	3448
49	Cumberland	2026CPT.06.20.10262.1	NC 210	NC 24	NC 210	7.92	8.269	0.349	23	0
50	Cumberland	2026CPT.06.20.10262.1	NC 217	US 401	HARNETT CL	0	3.18	3.18	210	0
51	Cumberland	2026CPT.06.20.10262.1	NC 24	NC 295 S	SAMPSON CL	9.006	29.773	20.767	331	5891
52	Cumberland	2026CPT.06.20.10262.1	NC 24	95 BUS (GROVE ST)	I-295	13.23	19.987	6.757	43	2756
53	Cumberland	2026CPT.06.20.10262.1	NC 242	BLADEN CL	CUMBERLAND CL	0	3.056	3.056	89	0
54	Cumberland	2026CPT.06.20.10262.1	NC 53	NC 24	NC 53	0	0.166	0.166	15	82
55	Cumberland	2026CPT.06.20.10262.1	NC 59	I 95 S	NC 162	4.97	0.028	4.942	1321	0
56	Cumberland	2026CPT.06.20.10262.1	NC 59	NC 59	NC 59	3.934	4.272	0.338	42	0
57	Cumberland	2026CPT.06.20.10262.1	NC 690	MOORE CL	NC 24	0	6.88	6.88	537	40
58	Cumberland	2026CPT.06.20.10262.1	SR 1615	US 401	RAMSEY	0	3.994	3.994	321	113
59	Cumberland	2026CPT.06.20.10262.1	NC 87	I 95 BUS	US 401 BUS	15.017	13.76	1.25	0	345
60	Cumberland	2026CPT.06.20.10262.1	US 13	I 95	SAMPSON CL	0.033	7.313	7.28	635	87
61	Cumberland	2026CPT.06.20.10262.1	US 301	I 95 BUS	HARNETT CL	16.22	30.764	14.544	1140	134
62	Cumberland	2026CPT.06.20.10262.1	US 301	I 95 BUS S	US 301	28.792	29.082	0.29	40	5
63	Cumberland	2026CPT.06.20.10262.1	US 401	HOKE CL	HARNETT CL	0	27.696	27.696	4845	6564
64	Cumberland	2026CPT.06.20.10262.1	US 401 Bus	US 401	US 401	0	9.654	9.654	576	3878
65	Cumberland	2026CPT.06.20.10262.1	US 401 Bus	US 401 BUS	US 401 BUS	7.303	7.503	0.2	62	11
									<b>12691</b>	<b>29777</b>
<b>Total:</b>									<b>166.71</b>	<b>42468</b>

Map	County	WBS	Route	From	To	MP_From	MP_To	Length	Quantity	Quantity
									Y/Y	C/R
66	Harnett	2026CPT.06.20.10432.1	NC 210	CUMBERLAND CL	US 401	0	14.059	14.059	1691	667
67	Harnett	2026CPT.06.20.10432.1	NC 210	US 401	JOHNSTON CL	16.142	26.753	10.611	1051	270
68	Harnett	2026CPT.06.20.10432.1	NC 24	MOORE CL	CUMBERLAND CL	0	14.004	14.004	1001	968
69	Harnett	2026CPT.06.20.10432.1	NC 27	US 401	US 421	25.36	32.369	7.009	309	1033
70	Harnett	2026CPT.06.20.10432.1	NC 24	CHATHAM CL	WAKE CL	0	5.998	5.998	421	4
71	Harnett	2026CPT.06.20.10432.1	NC 55	SAMPSON CL	NC 217/NC 82/US 421	0.009	22.326	22.317	96	101
72	Harnett	2026CPT.06.20.10432.1	NC 55	US 421	NC 55	0	6.98	6.198	515	108
73	Harnett	2026CPT.06.20.10432.1	NC 87	NC 24 W	LEE CL	5.403	14.009	8.606	355	1832
74	Harnett	2026CPT.06.20.10432.1	US 301	CUMBERLAND CL	JOHNSTON CL	0	9.703	9.703	891	154
75	Harnett	2026CPT.06.20.10432.1	US 401	CUMBERLAND CL	WAKE CL	0.019	22.112	22.093	1873	1152
76	Harnett	2026CPT.06.20.10432.1	US 421	SAMPSON CL	LEE CL	32.32	50.77	18.45	1882	3836
									<b>10085</b>	<b>10125</b>
<b>Total:</b>								<b>139.048</b>	<b>20210</b>	

Map	County	WBS	Route	From	To	MP_From	MP_To	Length	Quantity	Quantity
									Y/Y	C/R
77	Robeson	2026CPT.06.20.10782.1	NC 130	US 74 W	US 301	0.878	22.655	21.777	1553	96
78	Robeson	2026CPT.06.20.10782.1	NC 130	US 501	US 74 BUS	30.105	38.065	7.96	556	30
79	Robeson	2026CPT.06.20.10782.1	NC 130 BUS	NC 130	NC 130	0	4.49	4.49	306	9
80	Robeson	2026CPT.06.20.10782.1	NC 20	HOKE CL	BLADEN CL	0	15.38	15.38	1326	490
81	Robeson	2026CPT.06.20.10782.1	NC211	BLADEN CL	I 95	0	10.934	10.934	1088	920
82	Robeson	2026CPT.06.20.10782.1	NC 211	MAIN ST	HOKE CL	26.463	28.127	1.664	145	64
83	Robeson	2026CPT.06.20.10782.1	NC 41	SC LINE	BLADEN CL	0	34.195	34.195	2524	823
84	Robeson	2026CPT.06.20.10782.1	NC 71	US 74 BUS	US 301	0	27.135	27.135	2022	226
85	Robeson	2026CPT.06.20.10782.1	NC 83	DEAD END	NC 130	0	7.28	7.28	491	0
86	Robeson	2026CPT.06.20.10782.1	NC 710	US 501	NC 711	0	10.766	10.766	738	92
87	Robeson	2026CPT.06.20.10782.1	NC 710	SR 1346	NC 72	15.416	18.626	3.21	212	0
88	Robeson	2026CPT.06.20.10782.1	NC 711	PEMBROKE POINT	NC 72	1.062	11.19	10.128	282	398
89	Robeson	2026CPT.06.20.10782.1	NC 904	NC 130	COLUMBUS CL	0	14.922	14.922	996	6
90	Robeson	2026CPT.06.20.10782.1	US 301	I-95 S	CUMBERLAND CL	22.995	40.905	17.91	1445	369
91	Robeson	2026CPT.06.20.10782.1	US 301	US 301	US 501 S	40.648	40.887	0.239	25	0
92	Robeson	2026CPT.06.20.10782.1	US 74 ALT	I-74 W	I-74	0.022	15.435	15.413	1153	510
93	Robeson	2026CPT.06.20.10782.1	US 74 BUS	SCOTLAND CL	US 74 BUS	0	3.343	3.343	243	38
									<b>15105</b>	<b>4071</b>
<b>Total:</b>								<b>206.746</b>	<b>19176</b>	

**DF00548 Project Total: 950.62 119632**